

TREASURE COAST HIGH SCHOOL BAND

CHARMS MUSIC OFFICE USERS GUIDE



CHARMS music office assistant

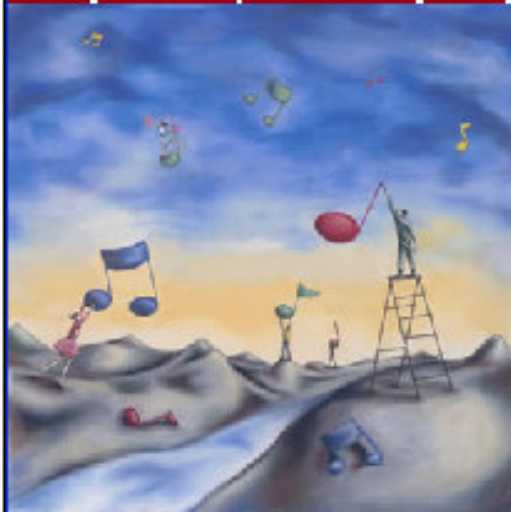
**web-based management
for your school music office**

harmony from chaos

*by Monique Danielsen
#1 in a series*

Home Contact Us About Charms Demo

Features Questions Pricing Free Trial Partners



CHARMS music office assistant

web-based management for your school music office

ENTER THE URL:
www.charmsmusic.com
to arrive at this page

TEACHER/HELPER LOGIN

Username:
Password:

PARENT/STUDENT LOGIN

School Code:
for a demo use "oornchoir" or "empirensband"

CHARMS TRAINING

Get the Most out of your Charms account! Attend or host a regional CharmSchool Workshop.

CHARMS GIVES YOU MORE TIME TO MAKE MUSIC

Why is Charms the #1 Music Office Assistant today?

Charms Music has had a major impact in the administrative aspects of the American Fork Band program. From student lists to total music and instrument inventory, Charms has simplified the process of student and instrument accountability.

Having students and parents access their information from their homes has been a great aid to our program.

Thank you for making this process so much more simplified and allowing me to do my job better!

John
Director of Bands
Charms Member since 2004
American Fork High School - Utah

For Parent/Student Login, enter our School Code here: **treasurecoastband**

[more testimonials](#) [who is using Charms?](#) [the Charms Advantage](#)

Charms News

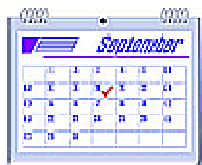
- [HOLIDAY CLOSING INFORMATION](#)
- [NEW FEATURE - Track Loaned Music](#)
- [WELCOME LORAIN CITY SCHOOLS, OHIO!](#)
- [TMEA HONOR ORCHESTRA - Haggard Middle School](#)
- [4 Charms Schools Perform at ACDA!](#)
- [Matthew Bridges featured in Instrumentalist](#)
- [Craig Fuchs on Cover of Instrumentalist](#)
- [Welcome Richardson ISD!](#)

Educator Toolset

The Conn-Selmer Music Educator Toolset provides resources for instrumental music teachers such as instrument planning, administrator support, parent information and instrument wish-lists. Click the toolbox below.

Exit

Treasure Coast High School Band - Parent and Student Information



public calendar



email teacher



handouts

Enter Student ID/Password

Enter

Enter Chaperone ID/Password

Enter

Program News

Posted Date - Headline

7/15/2007 - [BAND JACKET ORDER FORMS ARE ONLINE](#)

7/15/2007 - [Watch and Learn the 2007 Field Show](#)

6/24/2007 - [ONLINE METRONOME LINK](#)

6/20/2007 - [ORLANDO TRIP FESTIVAL PICTURES ARRIVED](#)

5/29/2007 - [New Login & ID Information - IMPORTANT](#)

5/29/2007 - [SUMMER BAND PST UPDATED INFORMATION](#)

Click any of these links to read important information .

Check back often.

ENTER YOUR SCHOOL STUDENT ID HERE.

Your school ID is printed on your schedule. See Mr. Madison if you have a problem logging in.

IMPORTANT: After you login the 1st time, it may be a good idea to change your password to a unique and confidential letter/number combination (up to 12 letters or numbers). Then enter that password here when you return the next time.

Exit

Treasure Coast High School Band - Parent and Student Information

Barney Bandmember



Program News

Posted Date - Headline

7/15/2007 - [BAND JACKET ORDER FORMS ARE ONLINE](#)

7/15/2007 - [Watch and Learn the 2007 Field Show](#)

6/24/2007 - [ONLINE METRONOME LINK](#)

6/20/2007 - [ORLANDO TRIP FESTIVAL PICTURES ARRIVED](#)

5/29/2007 - [New Login & ID Information - IMPORTANT](#)

5/29/2007 - [SUMMER BAND PST UPDATED INFORMATION](#)

OPTIONS HIGHLIGHTED WITH A RED BOX are currently NOT used by the Treasure Coast HS Band

VERY IMPORTANT:

After you login the 1st time, it may be a good idea to change your password to a unique and confidential letter/number combination (up to 12 letters or numbers). Then enter that password here when you return the next time.

[Exit](#) | [Main](#) | [Finances](#) | [Uniforms](#) | [Inventory](#) | [Forms](#)

Treasure Coast High School Band

January 2007

last updated 7/9/2007

[<<<December](#)

[February>>>](#)

| Sunday | Monday | Tuesday | Wednesday | Thursday | Friday | Saturday |
|--------------------|--|---|--|---|--|--|
| | 1 WINTER BREAK | 2 TEACHER WORK DAY | 3 | 4 | 5 | 6 |
| 7 | 8 SYMPHONIC TRMPTS & F HRNS ORLANDO TRIP PAYMENT # 2 DUE | 9 IRCC HONOR JAZZ BAND REHEARSAL | 10 | 11 | 12 | 13 |
| 14 | 15 [NO SCHOOL] | 16 IRCC HONOR CONCERT BAND REHEARSAL 6-9pm | 17 IRCC HONOR JAZZ BAND REHEARSAL 6-9pm | 18 SYMPHONIC LOW BRASS REHEARSAL | 19 IRCC HONOR CONCERT BND REHEARSAL 9am-5pm | 20 IRCC HONOR BANDS REHEARSAL & PERF. |
| 21 | 22 SYMPHONIC TRMPTS & F HRNS | 23 SYMPHONIC LOW BRASS | 24 | 25 | 26 EARLY RELEASE | 27 |
| 28 | 29 SYMPHONIC TRUMPTS & F HRNS | 30 SYMPHONIC LOW BRASS | 31 | | | |

1) Orlando Trip Payment is due 1 / 8 / 2007. The date on the information sheet is incorrect. 2) All members Traveling to ORLANDO must have the band collared shirt. 3) S&E monies is due by 1st hour NO EXCEPTIONS ON 1/5/06

Click on an event to get more information.

[Exit](#) [Main](#) [Finances](#) [Forms](#) [Uniforms](#) [Inventory](#) [Music](#) [Student Info](#) [Audio Files](#)

Treasure Coast High School Band - Barny Bandmember

Folders



ALL STATE
HONOR BAND
RESOURCES



BAND FORMS



Festival Recordings
2007



FINGERING
CHARTS



LEADERSHIP



MUSIC LISTENING



MUSIC
RESOURCES



SCALES AND
RUDIMENTS



SHEET MUSIC

General Handouts



Band Course
Information



Letterman Jacket
Order Form



Beatles Show Patch
Order Form

HANDOUTS in charms are downloadable files uploaded for you by the directors.

Click on a folder to see the contents.

Class Specific Handouts



Welcome Back
Packet



Online Drill Viewer
Instructions

Right Click on a file to open it. Left click to download it to your computer.

[Exit](#) [Main](#) [Finances](#) [Forms](#) [Uniforms](#) [Inventory](#) [Music](#) [Student Info](#) [Audio Files](#)

Treasure Coast High School Band - Barny Bandmember

Class Specific Handouts - SHEET MUSIC



Alma Mater - Brass



Fight Song - Brass



Titans Go - Brass



Maximum Strength - Brass



Star Spangled Banner - Brass



Lock You Up - Brass



Chameleon - Brass



Iron Man - Brass



Production - Brass



Closer - Brass



Opener - Brass

NOTE: Files are uploaded in relationship to YOUR CLASS/CATEGORY. For example, those students in the woodwind section may not be able to download music for brass. Check your student information screen to find out what class/category you are in.

[Exit](#) [Main](#) [Finances](#) [Forms](#) [Uniforms](#) [Inventory](#) [Music](#) [Student Info](#) [Audio Files](#)

Barny Bandmember 

Be sure to click "UPDATE" if you make any changes!

Student ID

Name (first, last)

Address

City, St Zip

Phone

E-mail

copy to mother father

Sex

Birthdate

Class 1

Class 2

Class 3

Class 4

Locker Comb.

Mother

Phone (w)

(h)

(c)

Address

City, St Zip

E-mail

Occupation/Skills

Father

Booster Volunteer

Phone (w)

(h)

(c)

Address

City, St Zip

E-mail

Occupation/Skills

Booster Volunteer

MAKE SURE WE HAVE YOUR LATEST INFO.

PLEASE KEEP THIS UPDATED SO THAT YOU WILL ALWAYS BE INFORMED!

[Exit](#) [Main](#) [Finances](#) [Forms](#) [Uniforms](#) [Inventory](#) [Music](#) [Student Info](#) [Audio Files](#)

Treasure Coast High School Band
Student Finance Summary - Barny Bandmember

Total Balance Due \$180.00

The TRIP LEDGER shows trips (such as room cost) as well as payments paid to date.

Trip Ledger Detail

| Paid Date | Trip | Amt Paid | Paid By | Paid From | Dep. Num |
|------------------------|---------------------------|----------|---------|-----------|----------|
| 7/15/2007 | Band Spring Trip - 450.00 | 200.00 | Cash | TR | 001 |
| Total of All Trips Due | | 450.00 | | | |
| Total Paid | | 200.00 | | | |
| Balance Due | | 250.00 | | | |

FEE PAYMENT HISTORY is used to track performance cost such as Guard uniforms, marching shoes, gloves, etc.

Fee Payment History

| Fee | Paid Date | Fee Amt | Paid By | | |
|-----------------------------------|-----------|----------------|---------|-----|--|
| Fair Share Uniform and Operations | 7/15/2007 | 80.00 | Cash | 001 | |
| Embroidered Mock Turtle Neck | 7/15/2007 | 25.00 | Cash | 001 | |
| Performance Collared Shirt | 7/15/2007 | 40.00 | Cash | 001 | |
| Total Fees Paid | \$145.00 | Total Fees Due | \$55.00 | | |

Fundraising Activity

FUNDRAISING ACTIVITY will show the value of items handed out to students and the payment amount received. The Profit Amount transfers to the Student Misc. Account.

| Trans Date | Activity | | | | |
|------------|----------------------|--------|--------|--------|-----------------|
| 7/15/2007 | Coupon Book Day | 100.00 | 100.00 | 100.00 | Stu Misc Ledger |
| 7/16/2007 | Easter Basket Raffle | 50.00 | 50.00 | 25.00 | Stu Misc Ledger |
| TOTALS | | 150.00 | 150.00 | 125.00 | |
| AMOUNT DUE | | 0.00 | | | |

Student Miscellaneous Ledger Detail

| Trans Date | Notes | Amt | Paid By | Dep. Num | Paid To | From |
|------------|-----------------------------------|--------|---------|----------|-------------|------|
| 7/15/2007 | Fundraising: Coupon Book Day | 100.00 | Cash | 001 | Not Applied | FR |
| 7/16/2007 | Fundraising: Easter Basket Raffle | 25.00 | Cash | 001 | Not Applied | FR |
| Total | | 125.00 | | | | |

The STUDENT MISCELLANEOUS LEDGER tracks your Student's Band Account. Items like reeds, Fundraiser Profit, Vale Oil etc. are tracked here.

TOTAL BALANCE DUE \$180.00

[Exit](#) [Main](#) [Finances](#) [Forms](#) [Uniforms](#) [Inventory](#) [Music](#) [Student Info](#) [Audio Files](#)

Treasure Coast High School Band
Student Forms Summary - Barny Bandmember

Forms Turned In

Forms Not Turned In

- Emergency Medical Treatment Form
- Media Release Form
- Permission To Travel Form
- Size and Item Order Form
- Statement of Understanding
- Student Information Form

This screen helps students track the required band forms. As the forms are turned in to the Band Office they are transferred to the "Forms Turned In" Box.

[Exit](#) [Main](#) [Finances](#) [Forms](#) [Uniforms](#) [Inventory](#) [Music](#) [Student Info](#) [Audio Files](#)

Treasure Coast High School Band
Student Uniform Assignments - Barny Bandmember

Uniforms Assigned

| Uniform Part | Item Number | Date Assigned | Condition | Size |
|---------------------------|-------------|---------------|-----------|-------|
| Marching - Symphonic Coat | 001 | 7/15/2007 | New | Large |

This screen tracks uniform items assigned to students.

[Exit](#) [Main](#) [Finances](#) [Forms](#) [Uniforms](#) [Inventory](#) [Music](#) [Student Info](#) [Audio Files](#)

Treasure Coast High School Band
Student Inventory Assignments - Barny Bandmember

Inventory Assigned

| Category | Brand | Description | Model | Item No | Condition | Date Assigned |
|-----------------|--------|-------------|-----------|---------|-----------|---------------|
| Brass - Concert | Yamaha | Bb Trumpet | YTR-4335G | 839818 | New | 7/15/2007 |

This screen tracks band instrument and equipment items assigned to students.

[Exit](#) [Main](#) [Finances](#) [Forms](#) [Uniforms](#) [Inventory](#) [Music](#) [Student Info](#) [Audio Files](#)

Treasure Coast High School Band

Music Assigned - Barny Bandmember

| Title | Copy Number | Date Assigned | Student Cost |
|----------------------------|--------------------|----------------------|---------------------|
| 101 Rhythmic Rest Patterns | Copy 2 | 7/15/2007 | 5.95 |

This screen tracks sheet music items assigned to students.